



Short Update 39a COVID-19 Coronavirus Disease 02nd of October 2020



GLOBAL

34 193 458

Confirmed cases
23 789 750
recovered
1 021 968 deaths

USA

(new cases/day 46 658)



7 224 698

confirmed cases
2 857 501 recovered
207 052 deaths

India

(new cases/day 86 821)



6 312 584

confirmed cases
5 273 201 recovered
98 678 deaths

Brazil

(new cases/day 33 412)



4 847 092

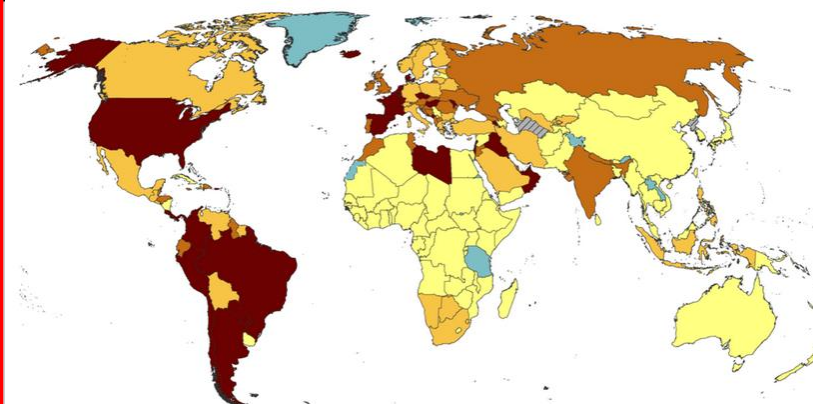
confirmed cases
4 299 659 recovered
144 680 deaths

News:

- **WHO:** fears that the death rate could continue to rise. After the 1 million death mark was recently reached worldwide, the WHO appeals to the world to continue rigorously implementing containment measures.
- **EU Commission:** Commission unveils first-ever [rule of law report](#): coronavirus emergency measures must respect EU's fundamental principles and values.
- **UNESCO:** has published recommendations calling on all those responsible for education to guarantee the right to inclusive and quality education. The expert group warns of regression in inclusive education. The corona pandemic is causing a global education crisis.
- **WHO/UN:** called on countries to develop and [implement action plans to promote the timely dissemination](#) of science-based information and [prevent the spread of false information](#) while respecting freedom of expression.
- The **EU Commission** wants to sign another contract with the Gilead company in the coming days to ensure that the EU states can reorder the remdesivir drug from October.
- **DEU:** the government's guidelines to tackle the virus, encapsulated in the acronym AHA, which stands for distancing, hygiene and face coverings, will be extended to [become AHACL](#). The "C" stands for the government's coronavirus warning app, and "L" for Lüften or airing a room.
- **Fake News:** In social networks, strangers have spread false reports about a six-year-old girl who is said to have died in Schweinfurt (Bavaria) while wearing a mask, police is warning.
- **WHO's** health emergencies online learning platform: [OpenWHO.org](#).
- Find Articles and other materials about COVID-19 on **our** website [here](#).
- Please use **our** online observation form to report your lessons learned observations as soon as possible [here](#).

Topics:

- **Global situation**
- **Subject in Focus:** Countering COVID-19: A European survey on acceptability and commitment to preventive measures
- **In the press**

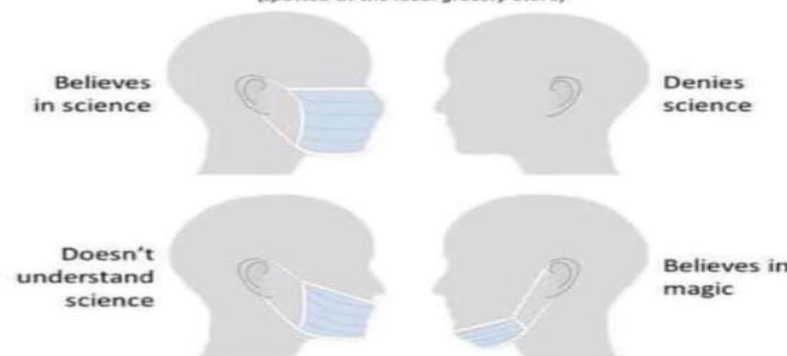


14-day COVID-19 case notification rate per 100 000, as of 01 of October, 2020

< 20.0 20.0 - 59.9 60.0 - 119.9 ≥ 120.0 No new cases reported

No cases reported by WHO and no cases identified in the public domain

The Four COVID Personality Types (spotted at the local grocery store)



Disclaimer:

This update provided by the NATO Centre of Excellence (NATO MILMED COE) on its website is for general information purposes only and cannot be considered as official recommendation. All national and international laws, regulations, and guidelines as well as military orders supersede this information. All information is provided in good faith, however, the NATO MILMED COE makes no representation or warranty of any kind, express or implied, regarding the accuracy, adequacy, validity, reliability, availability or completeness of any information. The information published on this website is not intended to substitute professional medical advice, diagnosis or treatment.

EUROPE

5 430 004

confirmed cases

2 740 750 recovered
231 855 deaths

Russia

(new cases/day 8 835)



1 179 634
confirmed cases

960 729 recovered
20 796 deaths

SPAIN

(new cases/day 9 419)



778 607
confirmed cases
150 376 recovered
31 973 deaths

FRA

(new cases/day 13 970)



577 505
confirmed cases
97 271 recovered
32 019 deaths

Global Situation

ESP: The Spanish central government ordered the partial closure of the Corona hotspot Madrid on Thursday against the will of the regional government. In addition to Madrid, nine other cities in the vicinity of the capital are also affected by the order.

DEU: After more than half a year, the federal government lifted the general travel warning due to the corona pandemic for more than 160 countries outside the European Union on Thursday night. Each country in the world is now assessed individually - just like the countries of the EU and the border-control-free Schengen area. A travel warning is only issued for those countries that have exceeded the limit of 50 new infections per 100,000 inhabitants in the past seven days. This currently applies in whole or in part to more than 130 countries. Travel is not recommended for around 50 other countries, regardless of the infection situation. The reason: There are still entry restrictions or an exit ban in the EU.

FRA: The number of new infections with the coronavirus has risen to more than 10,000. The health authorities reported 12,845 new infections within 24 hours on Wednesday evening. The French authorities are currently concerned about the increasing number of corona patients in intensive care units: 135 new patients were admitted nationwide within 24 hours, according to the health authority. This means that there are currently more than 1230 patients in intensive care units in France. 64 people reportedly died of COVID-19 in France within 24 hours.

CZE/SLO: The governments in the Czech Republic and Slovakia have declared a state of emergency again due to the increasing number of corona infections. In the Czech Republic, the state of emergency will apply from next week. In Slovakia, the state of emergency will come into force on Thursday. Starting next Monday, fans will no longer be allowed to enter the Czech stadiums for two weeks; the number of participants should be strictly limited at events. Operas and musicals are to be banned completely and secondary schools in particularly endangered areas are to be closed again. In Slovakia, the mask requirement also applies outdoors if the necessary minimum distance cannot be maintained. The number of participants at major events is limited to 50. The measures will initially remain in force until November.

GBR: For the first time since the outbreak of the corona pandemic, more than 7,000 new corona cases were counted in Great Britain on Tuesday. In addition, the number of new deaths doubled within a week: While the number of deaths with a corona infection last week was 37 cases in one day, there were 71 deaths on Tuesday. The number of corona patients in hospitals also increased noticeably. In view of the rapidly increasing numbers, stricter protective measures are again in force in large parts of the country: For example, in the north-east of England, but also in Northern Ireland and Scotland, members of different households are no longer allowed to meet with a few exceptions. In England, pubs and restaurants have to close at 10 p.m.

NLD: 3,011 people have been infected with the coronavirus in the past 24 hours. The numbers are currently increasing in all regions and across all age groups. In view of the increasing number of cases, the Netherlands has introduced stricter measures. For an initial three weeks, restaurants and bars have to close at 10 p.m. and no spectators are allowed at sporting events. Prime Minister Mark Rutte also called for people to travel as little as possible and prefer to work from home.

TUR: The Turkish Medical Association has sharply criticized the recording of official corona cases in the country. "The government has failed in terms of transparency and is manipulating COVID-19 statistics". The medical association had repeatedly criticized the official numbers in the past and assumes that the actual number is significantly higher. For the first time, the government published an unofficial list, showing that there were almost 30,000 new cases in one day in September alone. The medical association considers the number to be realistic. According to official information, there were 1,391 new cases of sick and 65 corona deaths in Turkey on September 30th.

POL: wants to impose further restrictions due to a record of new corona infections in several regions. With 285 cases, the focus was in the south of the country, but the region around the capital Warsaw (268) and Pomerania in the west (180) were also severely affected. Warsaw plans to reintroduce restrictions at regional level. Large cities like Danzig, Gdynia and Stettin are to be regarded as "yellow zones" in the future. This means requirements for celebrations, restaurants and fitness studios. In addition, there will soon be a mask requirement on the street. The number of "red zones" will be increased from two to 17. This also includes the Baltic Sea health resort Sopot near Gdansk. In the "red zones", it is already compulsory to wear a mask in the open air. In future, restaurants and bars will only be allowed to stay open until 10 p.m.

ISR: Almost two weeks after a lockdown began, the number of new corona infections in Israel has reached a record. The Ministry of Health announced on Thursday that 9013 new cases had been registered the day before. With 124 new infections within 24 hours, according to Palestinian information, there was also a record in the Gaza Strip. At 810, the number of seriously ill patients was still above a level that experts consider critical for overloading the health system. More than a quarter of the ultra-Orthodox tested for the coronavirus in Israel receive a positive result.

USA: Donald Trump and First Lady Melania Trump tested positive for the corona virus after a close employee was infected. Of the flood of misinformation, conspiracy theories and internet falsehoods about the coronavirus, one common thread stands out: President Trump. That is the conclusion of researchers at Cornell University who analyzed 38 million articles about the pandemic in English-language media around the world. Mentions of Mr. Trump made up nearly 38 percent of the overall "misinformation conversation," making the president the largest driver of the "infodemic" — falsehoods involving the pandemic. <https://www.nytimes.com/2020/09/30/us/politics/trump-coronavirus-misinformation.html>



Global Situation

Germany, Military support in the fight of COVID-19:

According to the Federal Ministry of Defence, more than 1,300 members of the German Army the Bundeswehr are currently supporting the civil authorities in testing and tracking chains of infection. "A total of around 1,350 soldiers of the Bundeswehr, including around 160 soldiers from the medical service, are currently deployed to provide aid."

At no time during this pandemic had so many soldiers been deployed due to the Corona outbreak at the same time, government circles said. According to the Ministry of Defence, around 320 soldiers are currently deployed in twelve federal states, including mobile test stations. To relieve the health authorities, 426 soldiers in 33 local offices would also help track chains of infection. In addition, the Bundeswehr is providing storage space for medical material. In total, a contingent of up to 15,000 soldiers is available at short notice to provide help.

So far, the Bundeswehr has received over 950 requests for support from all federal states and the federal government across Germany. So far, over 635 aid has been approved - of which around 130 are still being implemented. 463 aid has already been completed, and another 49 are currently being planned.

Case numbers is increasing in Germany, as in all other European states, during the last weeks. The Robert Koch Institute reported 2673 new infections in Germany within 24 hours on Friday - the highest value since the end of April.

A large number of COVID-19-related outbreaks continue to be reported in various settings. Case clusters are being reported particularly in the context of religious or family events, in nursing homes and hospitals, facilities for asylum-seekers and refugees, community facilities, various occupational settings, and among travellers.

	Number of patients	Percentage	Change to previous day*
Currently in ICU	362		7
- of these: mechanically ventilated	193	53%	-2
Discharged from ICU	17,605		27
- of these: deaths	4,197	24%	-8

<https://www.morgenpost.de/vermischtes/article230513914/Corona-Robert-Koch-Institut-Dunkelziffer-Reisewarnung.html>
https://www.rki.de/DE/Content/InfAZ/N/Neuartiges_Coronavirus/Situationsberichte/Okt_2020/2020-10-01-en.pdf?__blob=publicationFile

Jordan

The number of infections is rising rapidly in Jordan. 9,791 cases have been reported in the last four weeks, which corresponds to more than 80 percent of the total cases since mid-March. On October 01th alone, 1,776 new cases were reported.

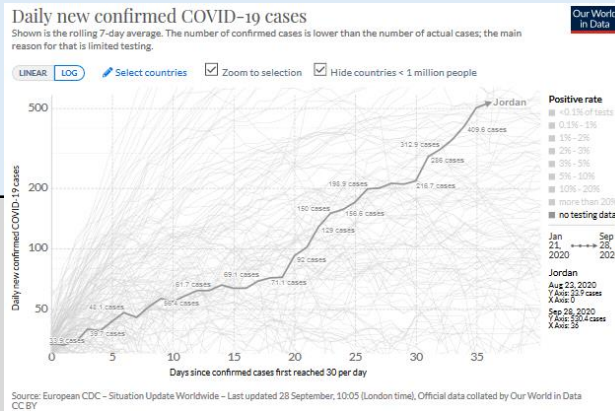
Jordan is considered an anchor of stability in the Middle East, but the country is making special headlines in the wake of the Corona crisis. Because here there was "the toughest curfew in the world". As soon as the first cases became known in mid-March, the Jordanian government reacted and imposed drastic measures. Schools, kindergartens and universities were immediately closed, all flights suspended and all national borders cordoned off. Public and private facilities were closed and on March 20, authorities imposed a nationwide curfew, which was enforced with the utmost rigor. At first, if you did not want to be arrested, you were not allowed to leave the apartment at all for several days: Almost 400 people were arrested on the first day alone because they were caught on the street - up to a year in prison had to be expected. Everything was closed, even pharmacies and supermarkets - harder than in Italy. So the incidence of infections remained low and the government slowly relaxed the restrictions over the past few months. After the incidence of infections has increased since the beginning of September, the Government has closed restaurants, public spaces, and most schools until at least October 1, 2020. Religious services, including those at mosques and churches, are also suspended. In addition, the Government of Jordan has implemented social distancing regulations and mandatory mask-wearing in business establishments, public transportation, and government facilities due to COVID-19. Jordan restricts gatherings to 20 people. Delivery services for food, public transportation, and health services remain available. The government announced that it would also punish those who held large gatherings. This also applies to weddings and funerals, which are said to be partly responsible for the increase in coronavirus cases. Anyone who violates the new rules must therefore expect a 14-day prison sentence.

Conclusion: A decisive factor for the further course will be whether the measures imposed two weeks ago can slow down the exponential course of the outbreak again, which will be reflected in the numbers in the next few days. If this does not succeed, the numbers will continue to rise and it will possibly lead to one of



the "toughest" curfews in the world again.

- <https://corona.moh.gov.jo/en>
- <https://www.who.int/countries/jor/>
- <https://jo.usembassy.gov/covid-19-information/>
- [Infekt Info Nr. 60i; Kdo SandstBw VI-2 MI2](https://infekt.info.nr.60i;KdoSandstBwVI-2MI2)
- <https://ourworldindata.org/>



Subject in Focus

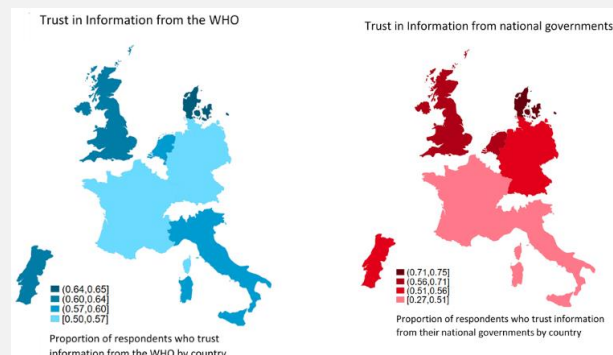
Countering COVID-19: A European survey on acceptability and commitment to preventive measures

Introduction:

a large-scale pan-european survey covering over 7500 individuals that are representative of the population in seven European countries with respect to region, age, gender and education. The fieldwork took place from April 2 to April 15 using an online questionnaire addressing such issues as people's risk perceptions, support of containment policies, trust in information, worries, vaccination attitudes, and prevention behavior in the context of the COVID-19 pandemic. Within this project, the survey will be conducted again twice in May and in June. The results will finally enable us to observe changes in acceptability and commitment to preventive measures over time. Here are some selected highlights out of the first results.

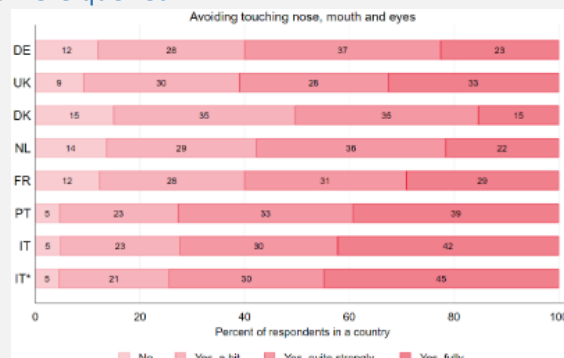
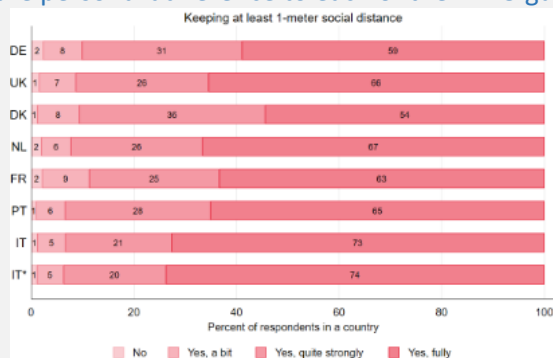
Trust in sources of information

The trust the information from the following sources were queried: The EU, the WHO, national governments, news channels, social media, hospitals, doctors, relatives and friends. The possible responses were 1 (do not trust at all) to 5 (trust very much).



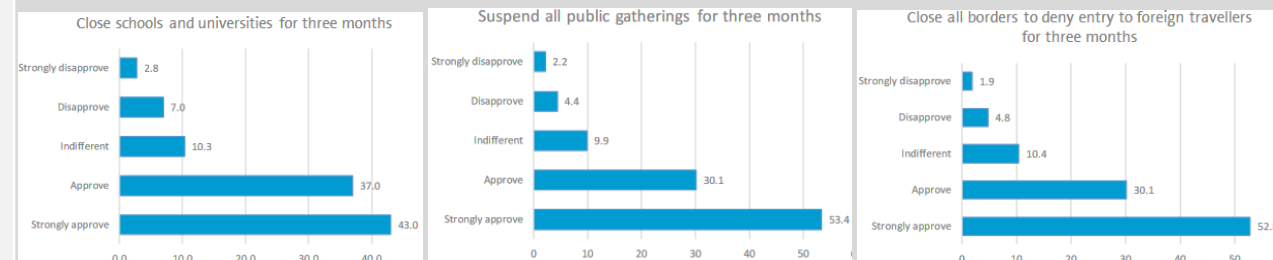
Adherence to the WHO basic protective measures

The recommendations about the advised behaviors to reduce the risk of a coronavirus infection have been well-communicated in all countries. The familiarity with the WHO hygiene recommendations and the personal adherence to each of the WHO guidelines were queried.



Policy Support

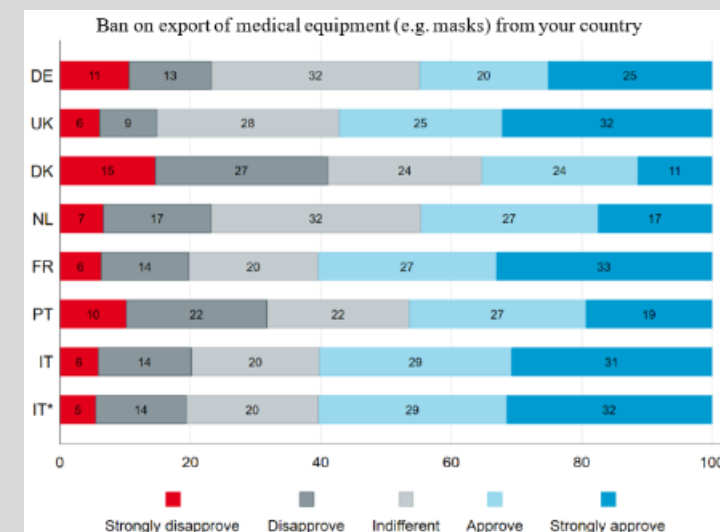
This part covers the approval or disapproval of policy measures taken by national governments to contain the COVID-19 outbreak. Topics as school closures, bans on public gatherings, border closures, bans imposed on the export of medical equipment, fines for quarantine violations, random temperature checks, curfews, public transport suspensions and utilization of mobile phone data for tracking COVID-19 cases and their contacts were covered.



Summary

On average, people in all European countries approve policies taken in response to the pandemic; however, the extent of approval differs by country and by specific policy measure.

People in all countries reacted strongly to the coronavirus caused crisis and changed their behaviours. Nevertheless, the average adherence to the WHO recommendations slightly differs across the EU. The question as to whether these cross-country differences indeed reflect a varying extent of behavioral changes or constitute effects of heterogeneous lockdown policies will be answered soon by a more comprehensive data analysis.



In the press

This section aims at summarizing trending headlines with regards to COVID-19. The collection does not aim at being comprehensive and we would like to point out that headlines and linked articles are no scientific material and for information purposes only. The headlines and linked articles do not reflect NATO's or NATO MilMed COE FHPB's view. Feedback is welcome!

21st September 2020

DW

EU plans international coronavirus tracing network

<https://www.dw.com/en/eu-plans-international-coronavirus-tracing-network/a-55009789>

01st October 2020

The Guardian

Drones, fever goggles, arrests: millions in Asia face 'extreme' Covid surveillance

<https://www.theguardian.com/global-development/2020/oct/01/drones-fever-goggles-arrests-millions-in-asia-face-extreme-covid-surveillance>

30th September 2020

Aljazeera

COVID-19: How to make indoor spaces safer

<https://www.aljazeera.com/features/2020/9/30/how-to-make-indoor-spaces-safer-from-covid-19-spread>

30th September 2020

The Guardian

Neanderthal genes increase risk of serious Covid-19, study claims

<https://www.theguardian.com/science/2020/sep/30/neanderthal-genes-increase-risk-of-serious-covid-19-study-claims>

30th September 2020

The Guardian

Germans embrace fresh air to ward off coronavirus

<https://www.theguardian.com/world/2020/sep/30/germans-embrace-fresh-air-to-ward-off-coronavirus>

01st October 2020

Aljazeera

COVID-19: UN calls for more support for 'people's vaccine' plan

<https://www.aljazeera.com/news/2020/10/1/un-calls-for-quantum-leap-in-support-for-covid-19-vaccine-plan>

01st October 2020

South China Morning Post

Coronavirus: home-made origami face masks may fit better than commercial ones, study suggests

<https://www.scmp.com/news/china/science/article/3103727/coronavirus-home-made-origami-face-masks-may-fit-better>

30th September 2020

Los Angeles Times

Largest study of COVID-19 transmission highlights essential role of super-spreaders

<https://www.latimes.com/world-nation/story/2020-09-30/largest-covid-19-transmission-study-highlights-super-spreaders>

THE NEW NORMAL



Be a role model. Show others the importance of cleaning hands, covering coughs and sneezes with a bent elbow, maintaining a distance of at least 1 metre from others and cleaning frequently touched objects and surfaces regularly.

Don't just say it,
Do it!

#StaySafe



The new normal!

In some places, as cases of COVID-19 go down, some control measures are being lifted.

But this doesn't mean we should go back to the 'old normal'.

If we don't stay vigilant and protect ourselves and others, coronavirus cases may go up again.

If we stop following the key protective measures, coronavirus can come rushing back.

Now, more than ever, it's important that we all follow our national health authority's advice and be part of helping to prevent coronavirus transmission.

Wherever you are, you still need to protect yourself against COVID-19.

Even as restrictions are lifted, consider where you are going and stay safe.



Avoid the Three C's



Be aware of different levels of risk in different settings.

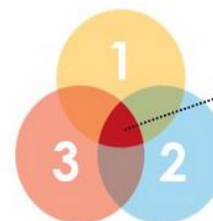
There are certain places where COVID-19 spreads more easily:



1 Crowded places
with many people nearby

2 Close-contact settings
Especially where people have close-range conversations

3 Confined and enclosed spaces
with poor ventilation



The risk is higher in places where these factors overlap.

Even as restrictions are lifted, consider where you are going and #StaySafe by avoiding the Three C's.

WHAT SHOULD YOU DO?



Avoid crowded places and limit time in enclosed spaces



Maintain at least 1m distance from others



When possible, open windows and doors for ventilation



Keep hands clean and cover coughs and sneezes



Wear a mask if requested or if physical distancing is not possible

If you are unwell, stay home unless to seek urgent medical care.



The perfect wave – why masks are still important



NEW STUDY ON MOUTH NOSE PROTECTION AND SOCIAL DISTANCING

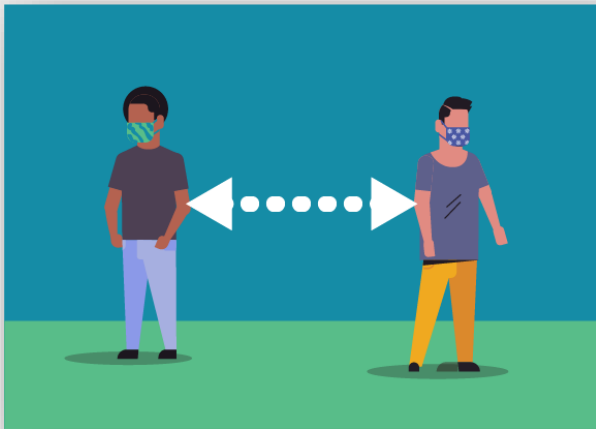
Unfortunately, in the epicenter of the new hot spots areas often enough people are seen who do not adhere to the still valid protective regulations such as social distancing and the correct wearing of a nose and mouth protection. It could be as simple as that - [new studies](#) show that these two measures make a significant contribution to reducing the probability of transmission.

In the case of protective masks with an advertised protective effect in connection with SARS-CoV-2, depending on the intended purpose, a distinction is made between two types:

Medical face masks (MNS; surgical (surgical) masks); are primarily used for third-party protection and protect the person against the exposure of potentially infectious droplets of the person wearing the face mask. Corresponding MNS protect the wearer of the mask if the fit is tight, but this is not the primary purpose of MNS. This is e.g. used to prevent droplets from the patient's breathing air from getting into open wounds of a patient. Since, depending on the fit of the medical face mask, the wearer not only breathes in through the filter fleece, but the breathing air is drawn in as a leakage current past the edges of the MNS, medical face masks generally offer the wearer little protection against aerosols containing excitation. However, you can protect the mouth and nose area of the wearer from the direct impact of exhaled droplets from the other person as well as from pathogen transmission through direct contact with the hands.

Particle-filtering half masks (FFP masks); are objects of personal protective equipment (PPE) in the context of occupational safety and are intended to protect the wearer of the mask from particles, droplets and aerosols. The design of the particle-filtering half masks is different. There are masks without an exhalation valve and masks with an exhalation valve. Masks without a valve filter both the inhaled air and the exhaled air and therefore offer both internal and external protection, although they are primarily designed for internal protection only. Masks with valves only filter the inhaled air and therefore **offer no external protection!!!**

As a large number of unrecognized people move around in public spaces without symptoms, mouth and nose protection protects other people, thereby reducing the spread of the infection and thus indirectly reducing the risk of becoming infected



Due to the occasion, it should be pointed out again and again, also by executives, that the correct way of wearing the mask is essential to achieve maximum protection. The mask wrong, e.g. for example, wearing it under the nose means accepting a possible infection of others.

FFP2 / 3 masks are still considered deficient equipment and should be kept available for healthcare workers and emergency services.

When wearing a facemask, don't do the following:

